



## SNOWMAN HOUSE

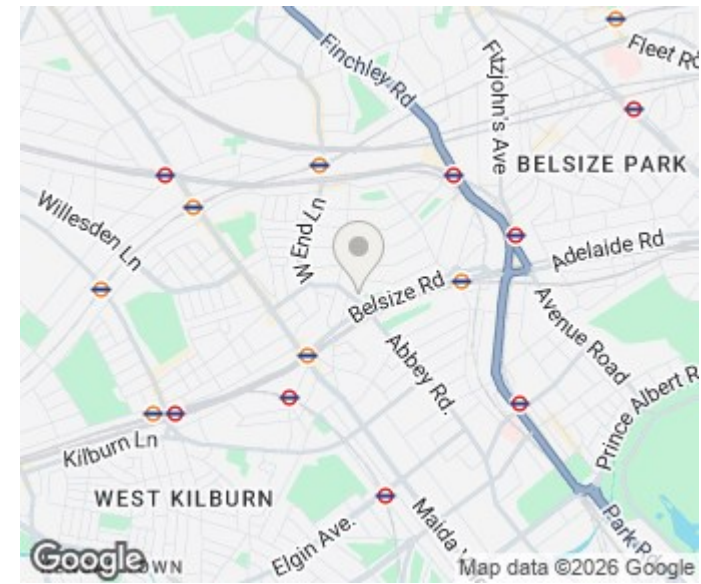
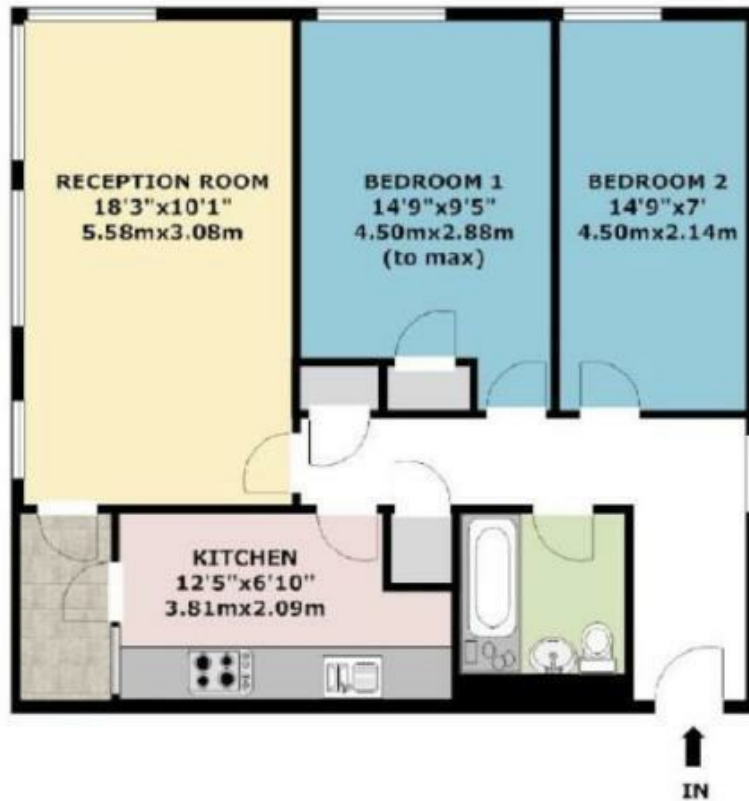
LONDON, NW6

£2,400 PCM

Nestled in the vibrant area of Abbey Road, London. Comprising two well-proportioned bedrooms, spacious reception room and a conveniently located bathroom.

Abbey Road is renowned for its rich cultural history and lively atmosphere. Residents can enjoy easy access to local amenities, including shops, cafes, and parks, all within a short distance. The area is well-connected by public transport, allowing for effortless travel across London.

**PMP** | INTERNATIONAL



Energy Efficiency Rating		
	Current	Potential
Very energy efficient - lower running costs		
(92 plus) <b>A</b>		
(81-91) <b>B</b>		
(69-80) <b>C</b>		
(55-68) <b>D</b>		
(39-54) <b>E</b>		
(21-38) <b>F</b>		
(1-20) <b>G</b>		
Not energy efficient - higher running costs		
<b>England &amp; Wales</b>	EU Directive 2002/91/EC	

Agents Note: Whilst every care has been taken to prepare these particulars, they are for guidance purposes only. All measurements are approximate and are for general guidance purposes only and whilst every care has been taken to ensure their accuracy, they should not be relied upon and potential buyers/tenants are advised to recheck the measurements

London  
PMP International  
94 Belsize Lane  
Belsize Park  
London  
NW3 5BE

020 7701 2878  
info@pmpi.co.uk  
www.pmpi.co.uk

**PMP** | INTERNATIONAL